

# NEXEED TRANSPARENCY KIT



# Nexeed Transparency Kit

Kai Lorentzen

Product Owner

[Kai.Lorentzen@de.bosch.com](mailto:Kai.Lorentzen@de.bosch.com)

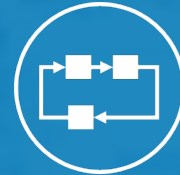
Mobil +49 152 218 495 14





# Nexeed Transparency Kit

The Nexeed Manufacturing Kit helps manufacturing staff to understand production lines better, shorten reaction times, fix issues faster and increase productivity.



Our **Heatmap** visualizes part flow, bottlenecks and deviations at line level

Our **Condition Monitoring** identifies issues faster by monitoring machine-relevant parameters



## Benefits

- ▶ Out-of-the-box & stand-alone system
- ▶ Simple & non-intrusive
- ▶ Short installation time
- ▶ Low investment costs

# Nexeed Transparency Kit Challenges



**Lack of part flow  
visibility**  
for the identification of real  
bottlenecks and deviations

**Unplanned  
downtimes**  
due to station  
breakdowns

**Long reaction  
times**  
for fixing line and  
machine issues



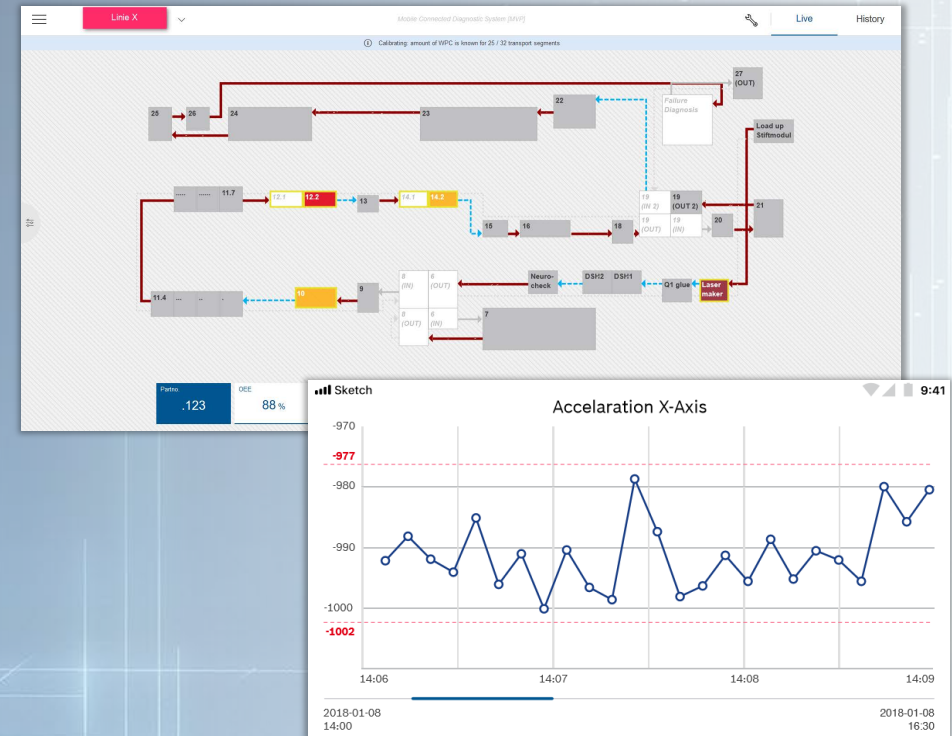
# Nexeed Transparency Kit Approach



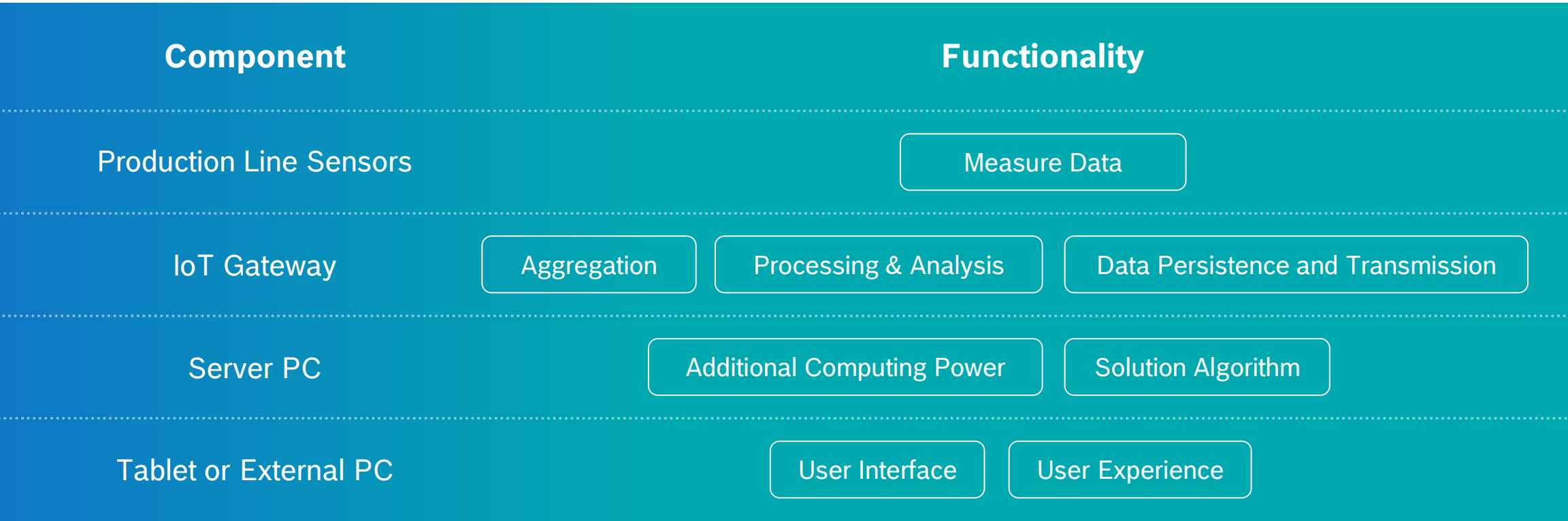
Solution at line level that delivers a **Heatmap** with real-time and historical data of part flow, bottlenecks, deviations, hourly count and OEE

Solution at station level that monitors machine-relevant parameters to diagnose issues faster via **Condition Monitoring**

Out-of-the-box kit with stand-alone sensors, IoT Gateway, and server PC



# Nexeed Transparency Kit Architecture Overview



# Nexeed Transparency Kit

## Benefits



Stand-alone feature with **no negative impact** on other plant systems and line operation

All components supplied in out-of-the-box scenario, ensuring **short implementation times**

Proven algorithm to **identify real bottlenecks** and track deviations

**Shorter reaction times** to issues thanks to real-time alerts

**Low investment costs**

# 2-5%

higher OEE

Simple, **Line transparency**  
non-intrusive system

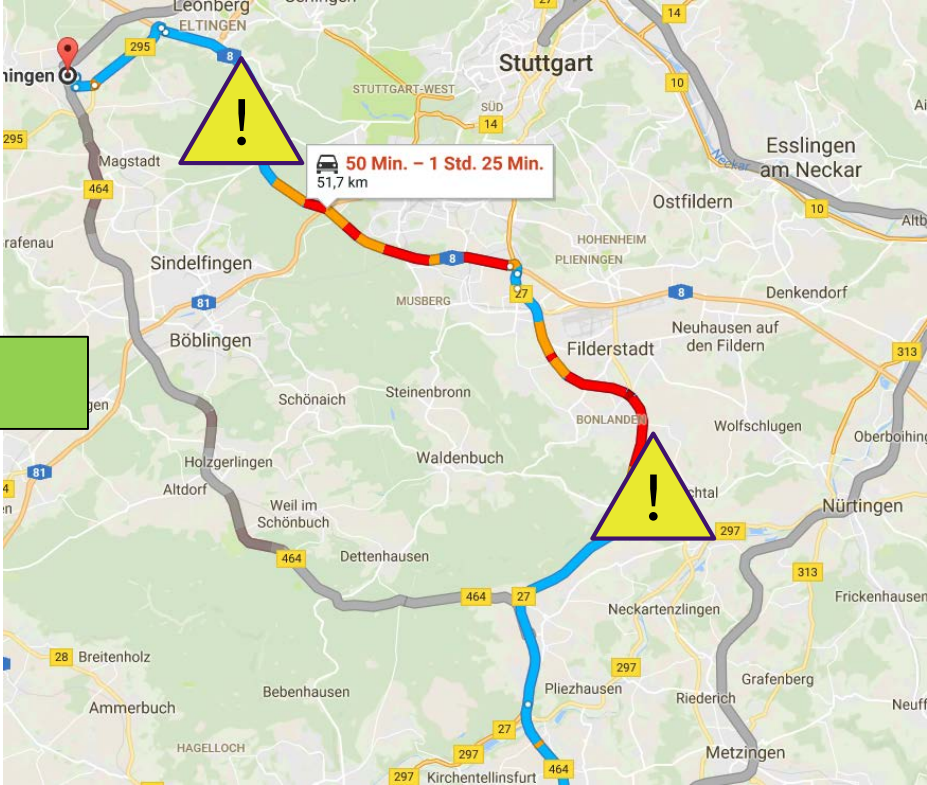
Combination of both  
real-time and historical data

**User-friendly visualization**

# WORKSHOPINHALT

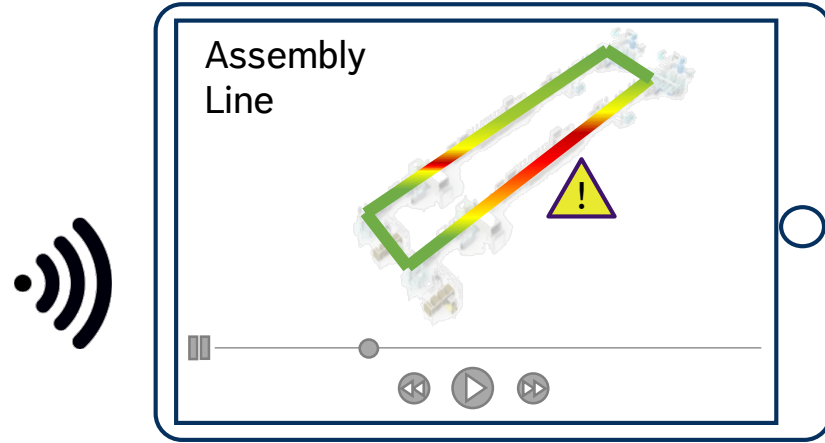
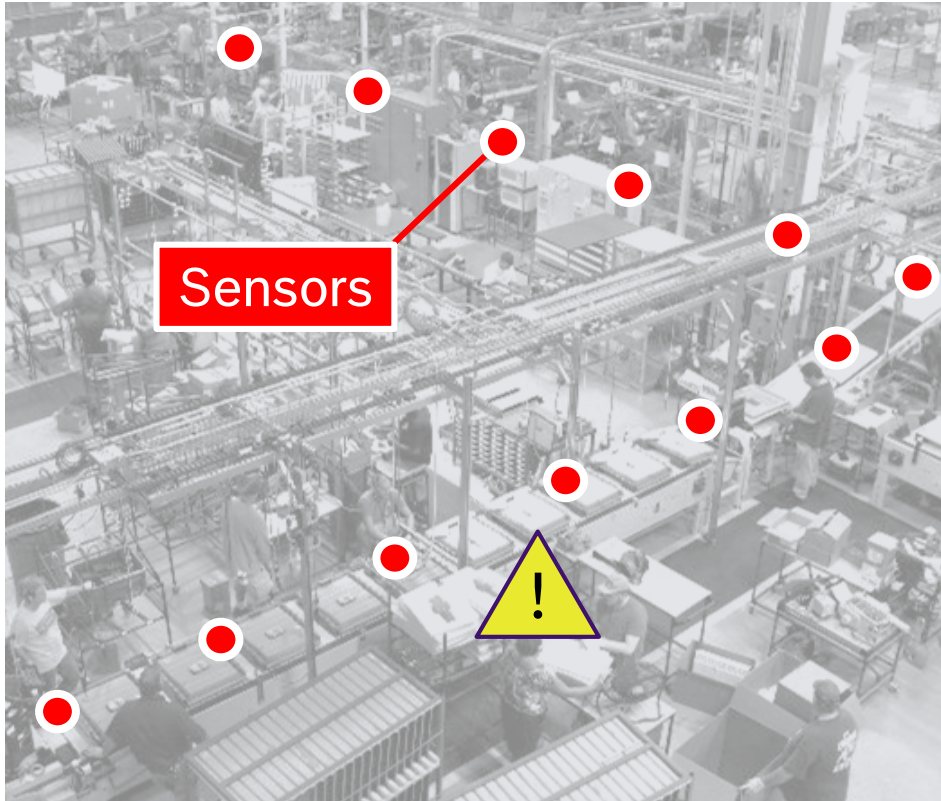


# Nexeed Transparency Kit Idea



# Nexeed Transparency Kit

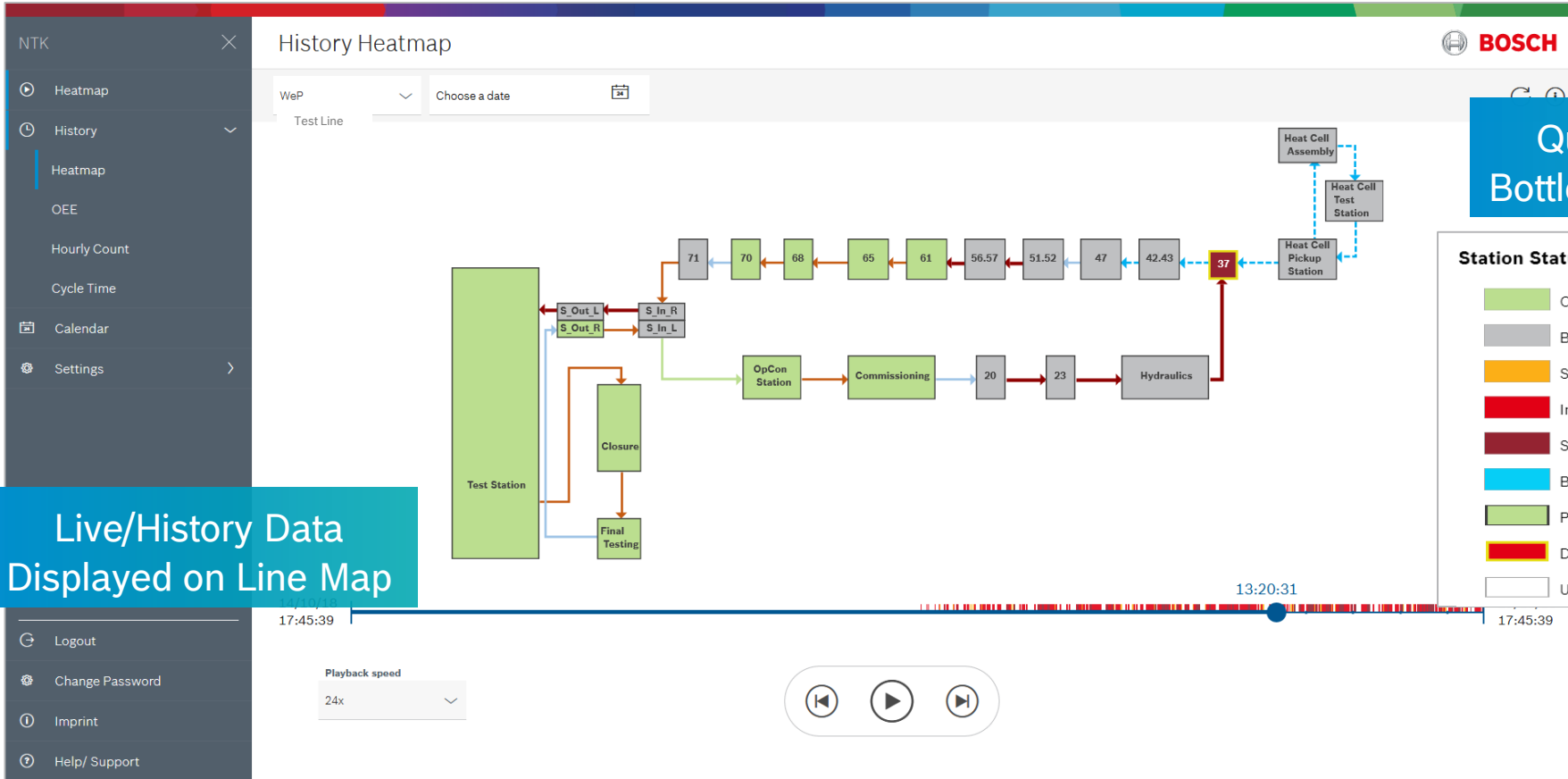
## Approach



Solution at line level that delivers a **heatmap** with real-time and historical data of:

- Part flow
- Bottlenecks
- Deviations
- Hourly count
- OEE pareto

# Nexeed Transparency Kit Visualization



Quick Identification of Bottlenecks and Deviations

Live/History Data Displayed on Line Map